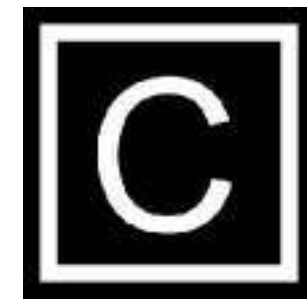




**Livingstone Tree**  
investeerder in duurzaam wonen



**COURAGE architecten**  
architect



**BOAM**  
bouwmanagement



**Constabiel**  
constructeur



**Spekschate**  
installatieadvies



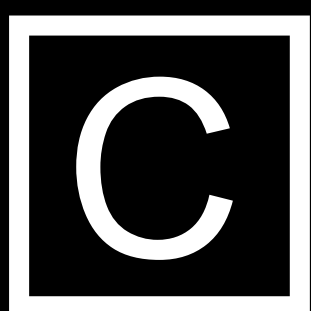
**Bordewijk De Adviseurs**  
adviseur bouwfysica, brand, geluid en energieprestatie



**Nederwoon**  
verhuur en beheer

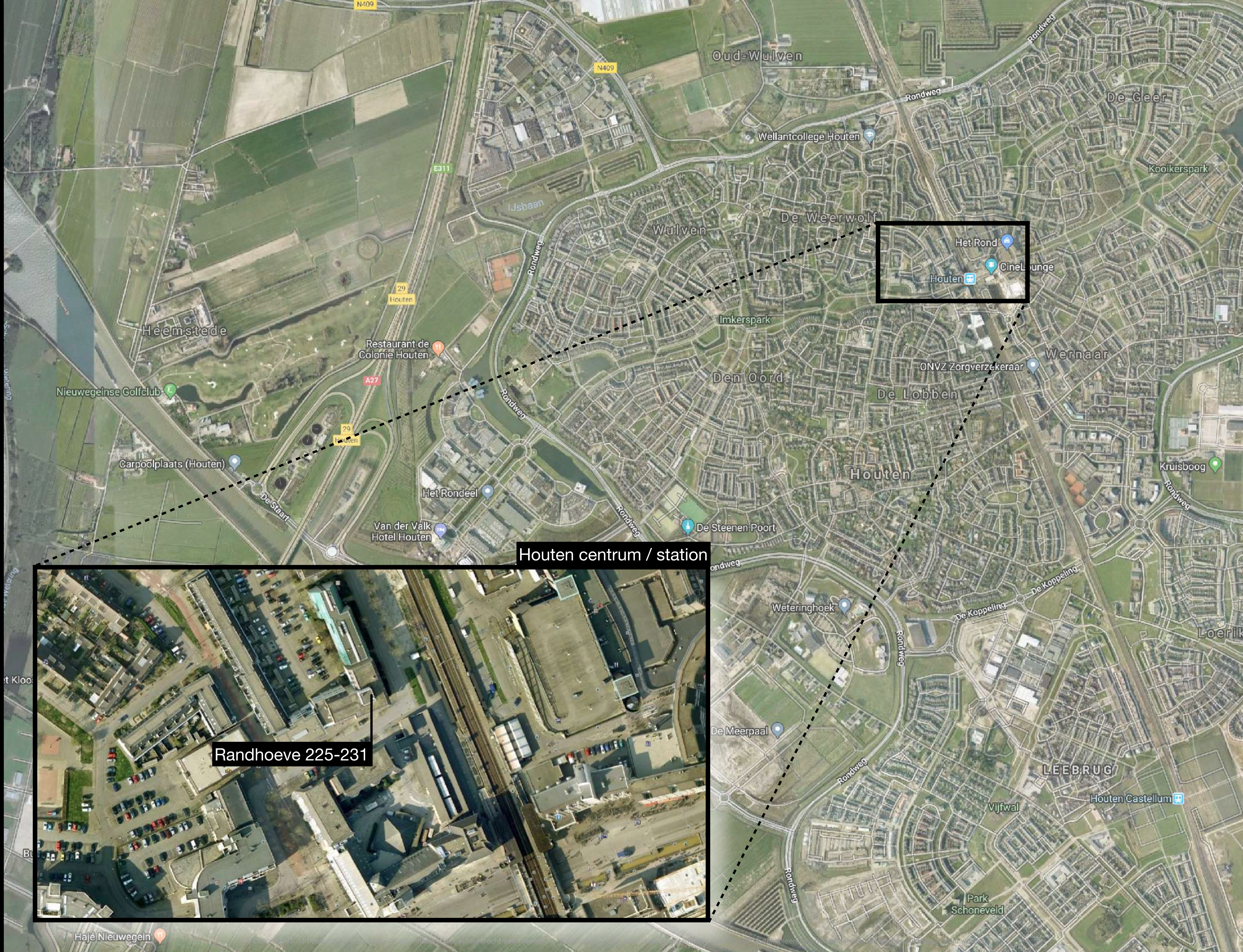


referentie Livingstone Tree Amersfoort



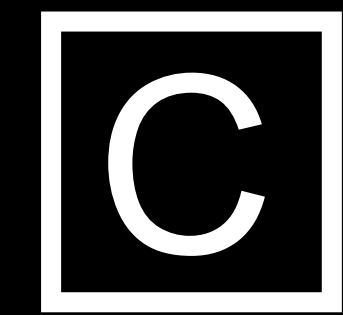
# 1804 - RANDHOEVE HOUTEN

locatie - Livingstone Tree - 23.01.2018



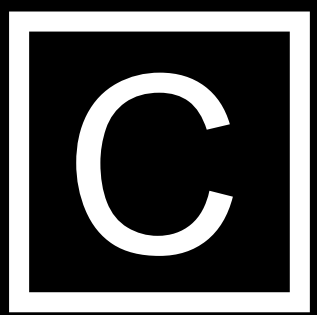
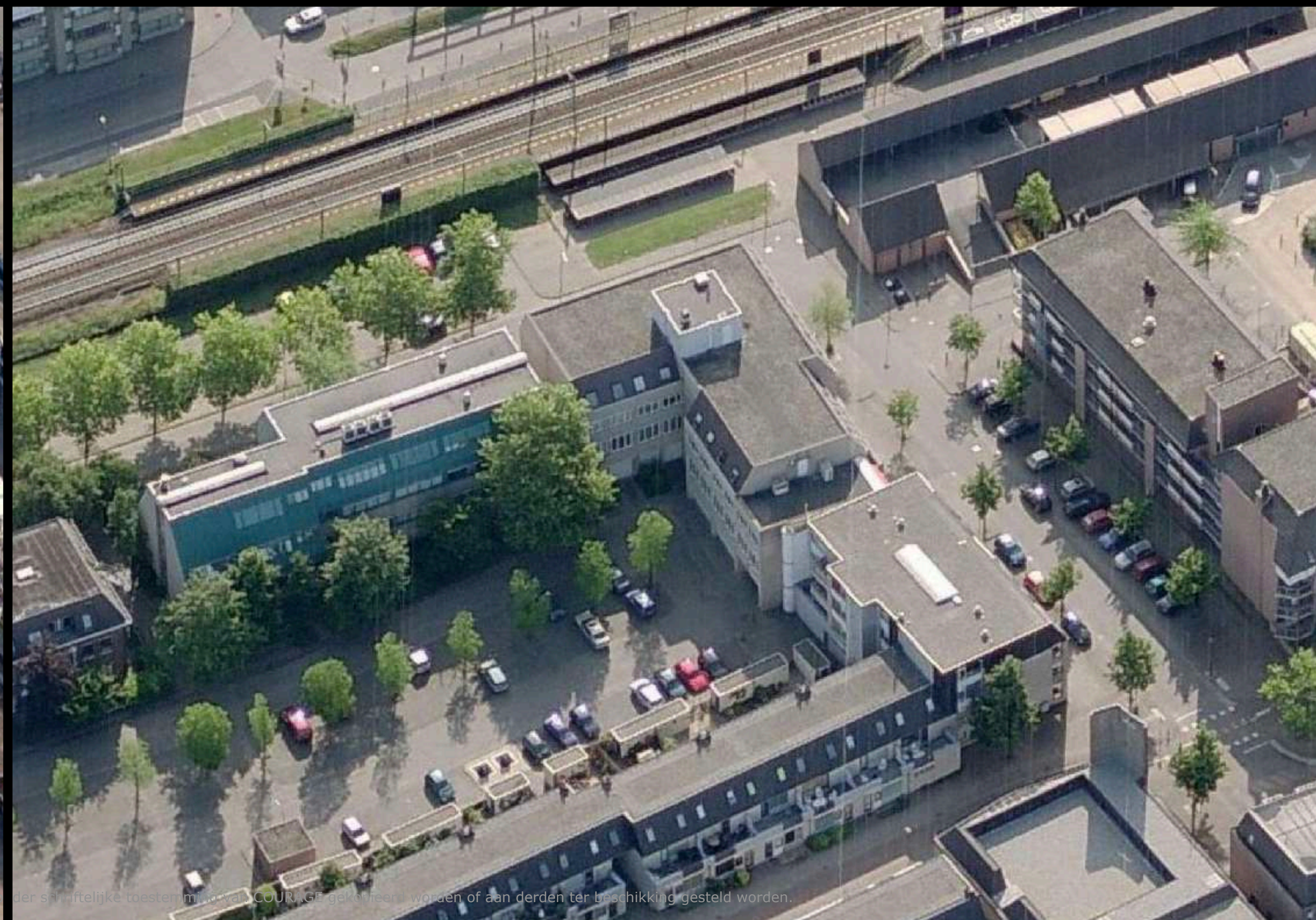
Houten centrum / station

Randhoeve 225-231






# 1804 - RANDHOEVE HOUTEN

locatie - Livingstone Tree - 23.01.2018



# 1804 - RANDHOEVE HOUTEN

indeling - Livingstone Tree - 23.01.2018

		BG	V1	V2	V3	V4 (optop)	TOTAAL	
sociale sector		1-kamer appartement <32m2	6	8	10	12	12	48
vrije sector		1-kamer appartement >32m2	3	4	2	1	1	11
		2-kamer appartement	2	2	2	1	1	8
			11	14	14	14	14	67



1e verdieping (basis principe)

begane grond



1e verdieping



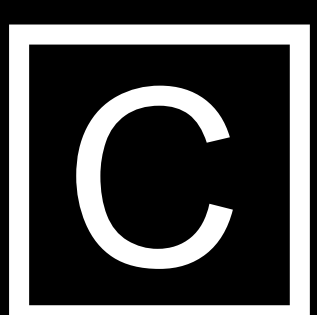
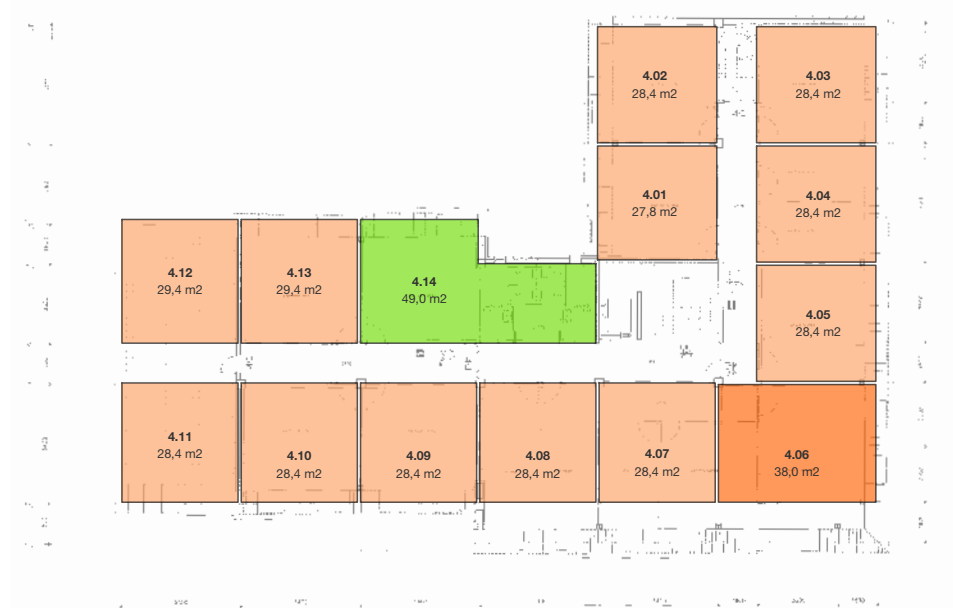
2e verdieping



3e verdieping

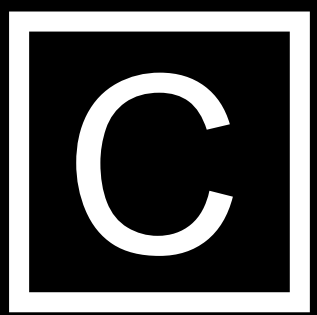
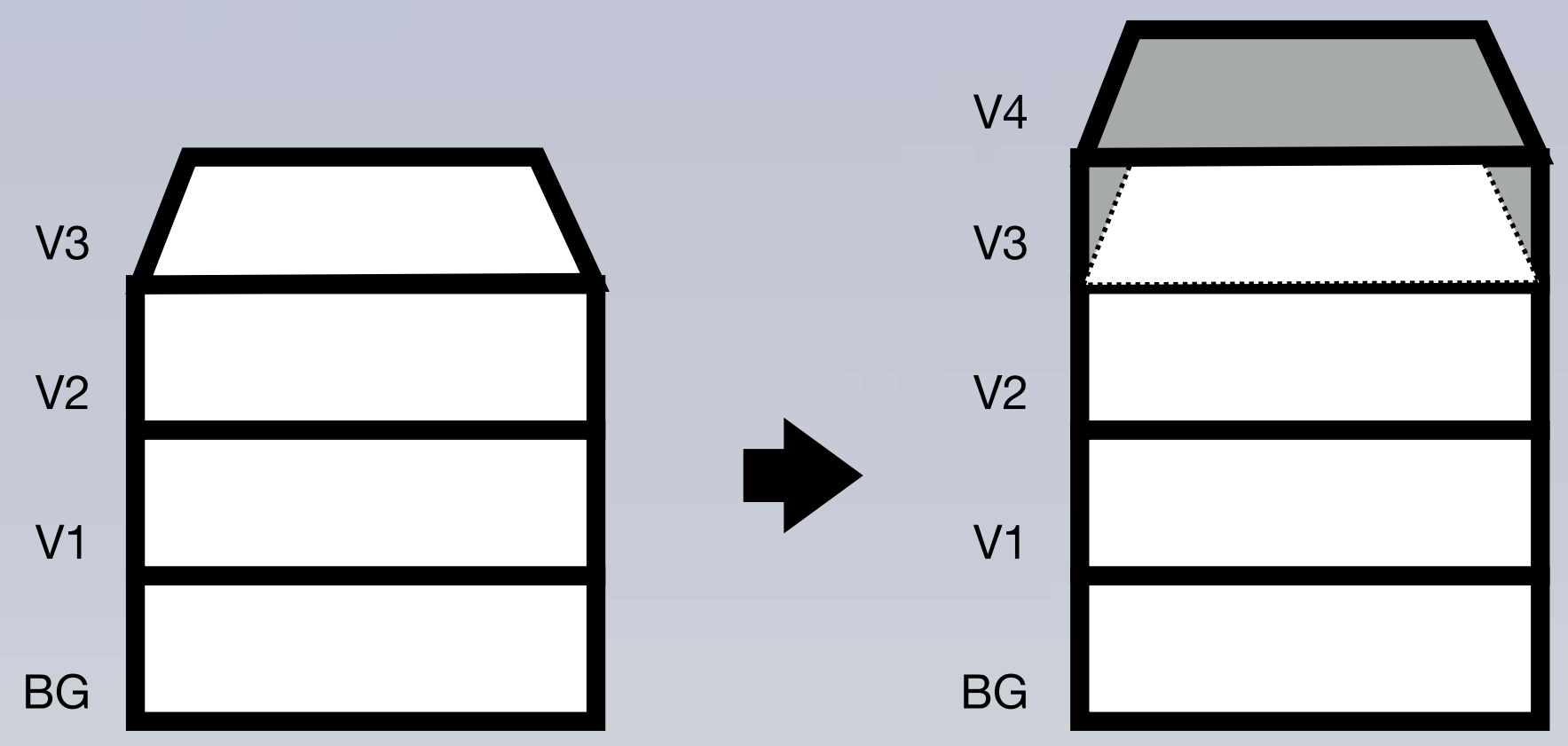


4e verdieping (nieuwe bouwlaag)



# 1804 - RANDHOEVE HOUTEN

locatie - Livingstone Tree - 23.01.2018





stalen kozijnen



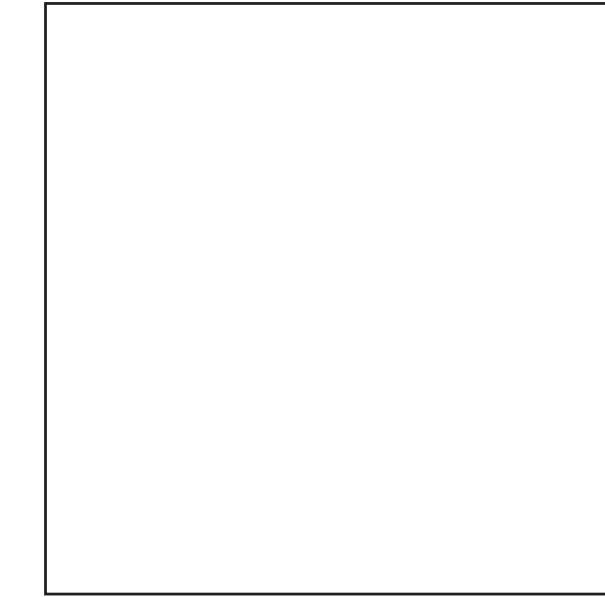
deurklink



Mi Light domotica LED



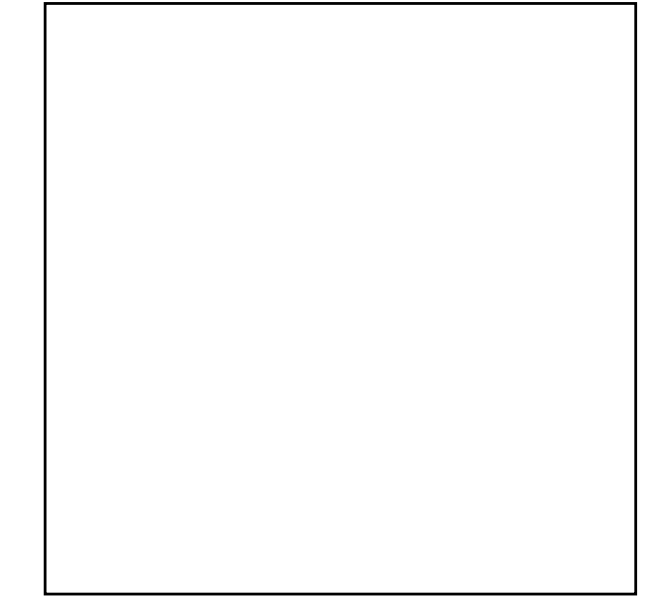
MDF plint



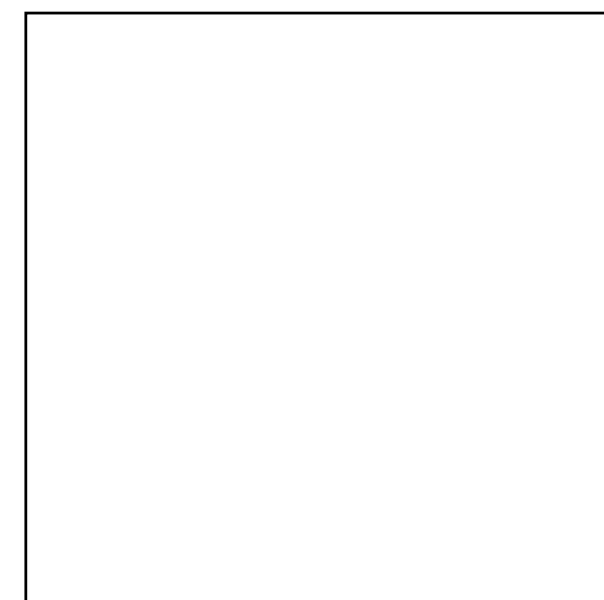
HPL deuren



schilderijrails



gipsplafond



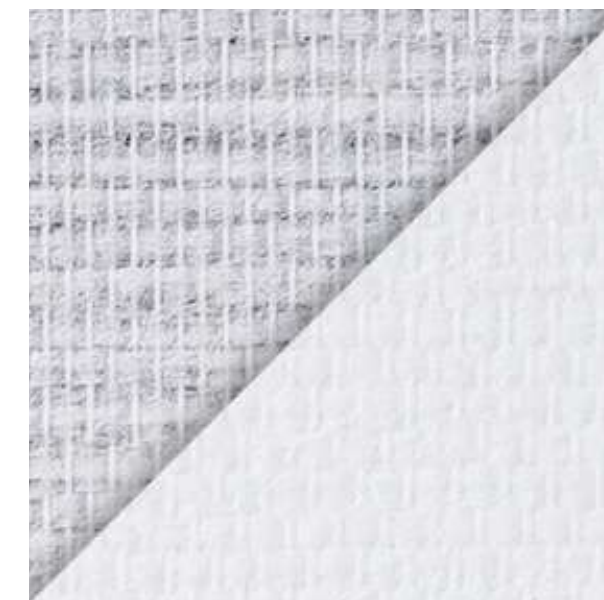
keukenfronten + grepen



keukenblad + achterwand



gordijnstof + rails



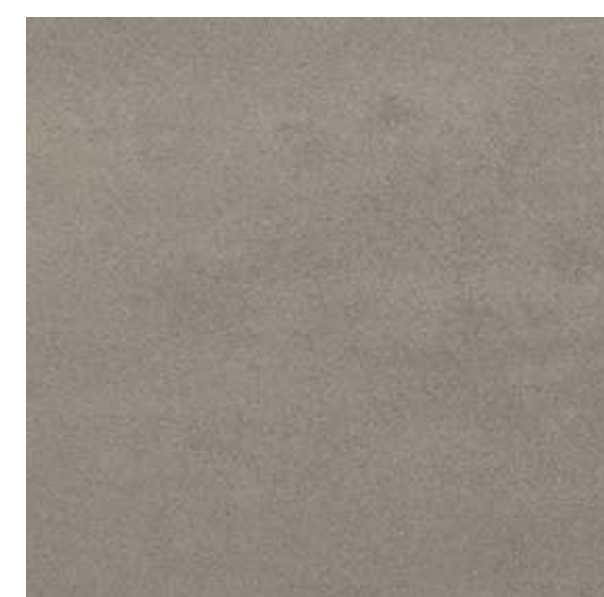
wand: scanbehang, gladde variant, gegrond



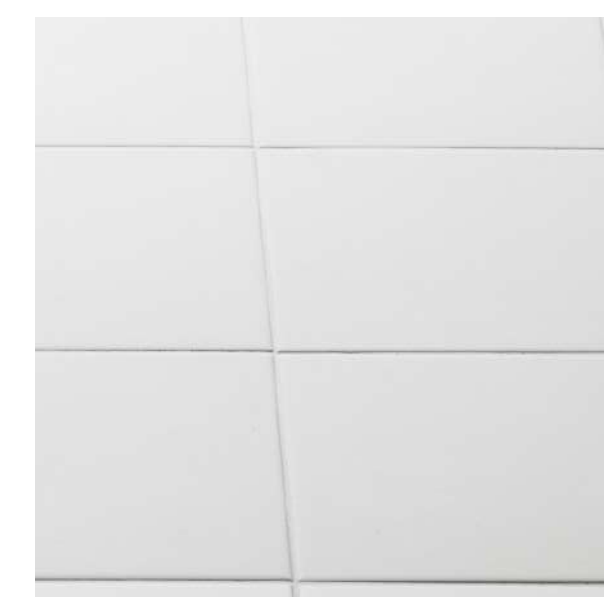
PVC vloerafwerking



Uitklapbare bedkast



badkamer vloertegel en wandtegel 60x60cm



badkamer wandtegel 60x30cm



antraciet

taupe / hout

wit

kleurenpalet



woningtype A

